

APPLICANT

MAXIMUS OPERATING, LTD.

Greenwood-Waskom Field

CADDO PARISH, LOUISIANA

Docket No. 19-235
Travis Peak Zone, Sand Unit 100

June 11, 2019

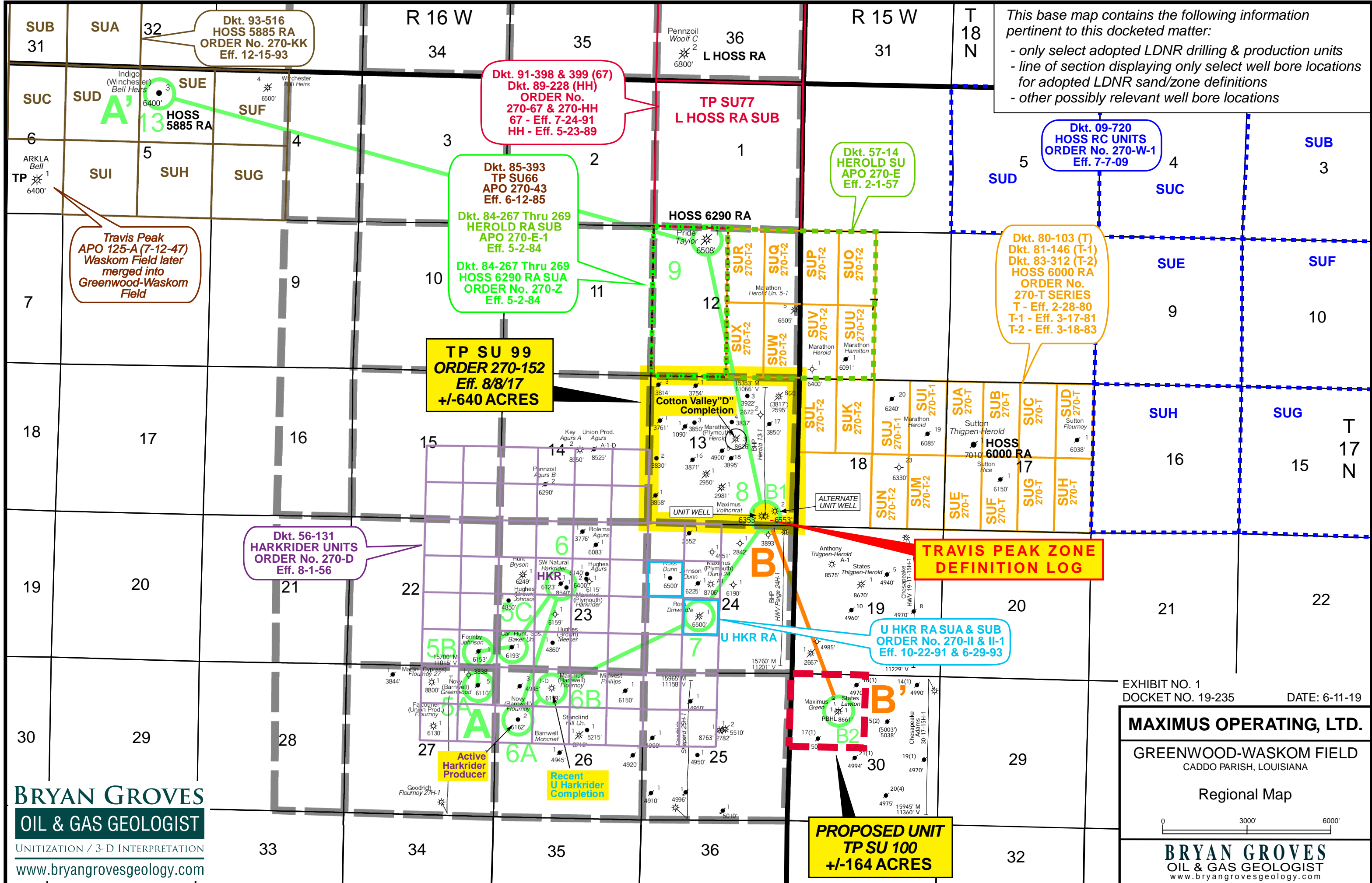
Witness: Bryan S. Groves

prepared by

BRYAN GROVES
OIL & GAS GEOLOGIST

UNITIZATION / 3-D INTERPRETATION

www.bryangrovesgeology.com



This base map contains the following information pertinent to this docketed matter:

- only select adopted LDNR drilling & production units
- line of section displaying only select well bore locations for adopted LDNR sand/zone definitions
- other possibly relevant well bore locations

Dkt. 93-516
HOSS 5885 RA
ORDER No. 270-KK
Eff. 12-15-93

Dkt. 91-398 & 399 (67)
Dkt. 89-228 (HH)
ORDER No. 270-67 & 270-HH
67 - Eff. 7-24-91
HH - Eff. 5-23-89

Dkt. 85-393
TP SU66
APO 270-43
Eff. 6-12-85

Dkt. 84-267 Thru 269
HEROLD RA SUB
APO 270-E-1
Eff. 5-2-84

Dkt. 84-267 Thru 269
HOSS 6290 RA SUA
ORDER No. 270-Z
Eff. 5-2-84

Dkt. 09-720
HOSS RC UNITS
ORDER No. 270-W-1
Eff. 7-7-09

Travis Peak
APO 125-A (7-12-47)
Waskom Field later merged into Greenwood-Waskom Field

Dkt. 80-103 (T)
Dkt. 81-146 (T-1)
Dkt. 83-312 (T-2)
HOSS 6000 RA
ORDER No. 270-T SERIES
T - Eff. 2-28-80
T-1 - Eff. 3-17-81
T-2 - Eff. 3-18-83

TP SU 99
ORDER 270-152
Eff. 8/8/17
+/-640 ACRES

Cotton Valley "D"
Completion

TRAVIS PEAK ZONE
DEFINITION LOG

Dkt. 56-131
HARKRIDER UNITS
ORDER No. 270-D
Eff. 8-1-56

U HKR RA SUA & SUB
ORDER No. 270-II & II-1
Eff. 10-22-91 & 6-29-93

Active Harkrider Producer

Recent U Harkrider Completion

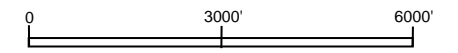
PROPOSED UNIT
TP SU 100
+/-164 ACRES

EXHIBIT NO. 1
DOCKET NO. 19-235
DATE: 6-11-19

MAXIMUS OPERATING, LTD.

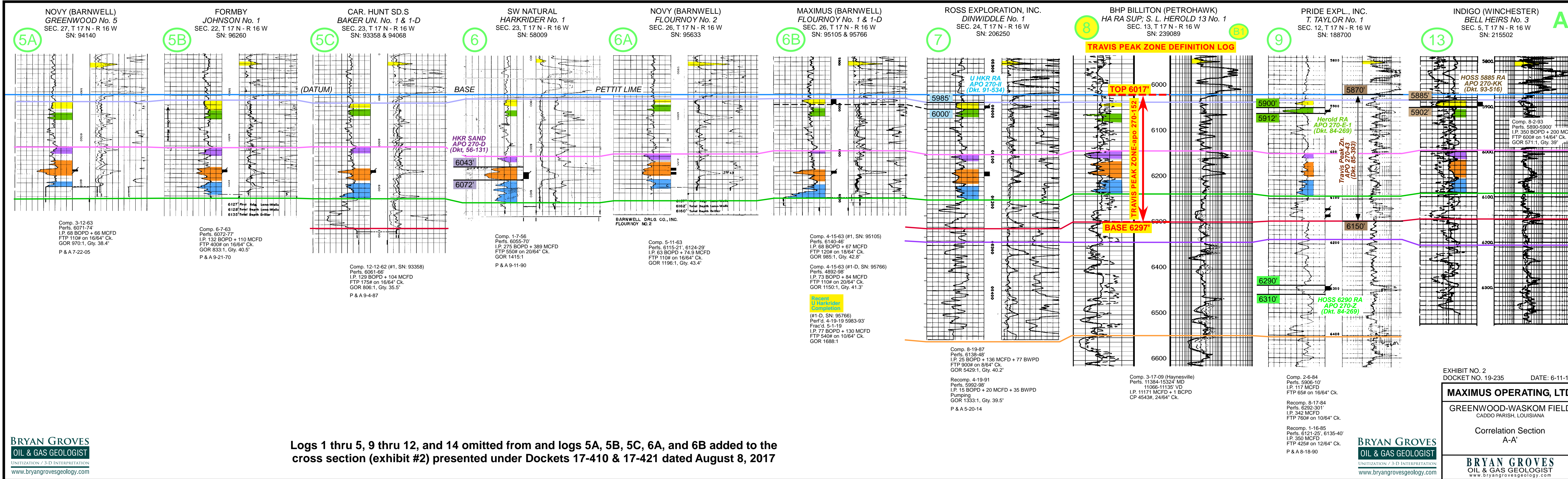
GREENWOOD-WASKOM FIELD
CADDO PARISH, LOUISIANA

Regional Map



BRYAN GROVES
OIL & GAS GEOLOGIST
www.bryangrovesgeology.com

BRYAN GROVES
OIL & GAS GEOLOGIST
UNITIZATION / 3-D INTERPRETATION
www.bryangrovesgeology.com



Logs 1 thru 5, 9 thru 12, and 14 omitted from and logs 5A, 5B, 5C, 6A, and 6B added to the cross section (exhibit #2) presented under Dockets 17-410 & 17-421 dated August 8, 2017

EXHIBIT NO. 2
DOCKET NO. 19-235 DATE: 6-11-19

MAXIMUS OPERATING, LTD.

GREENWOOD-WASKOM FIELD
CADDO PARISH, LOUISIANA

Correlation Section
A-A'

BRYAN GROVES
OIL & GAS GEOLOGIST
www.bryangrovesgeology.com

B
B1

BHP BILLITON (PETROHAWK)
HA RA SUP; S. L. HEROLD 13 No. 1
SEC. 13, T 17 N - R 16 W
SN: 239089

STATES
LAWTON No. 1
SEC. 30, T 17 N - R 15 W
SN: 53658

B'

B2

TRAVIS PEAK ZONE DEFINITION LOG

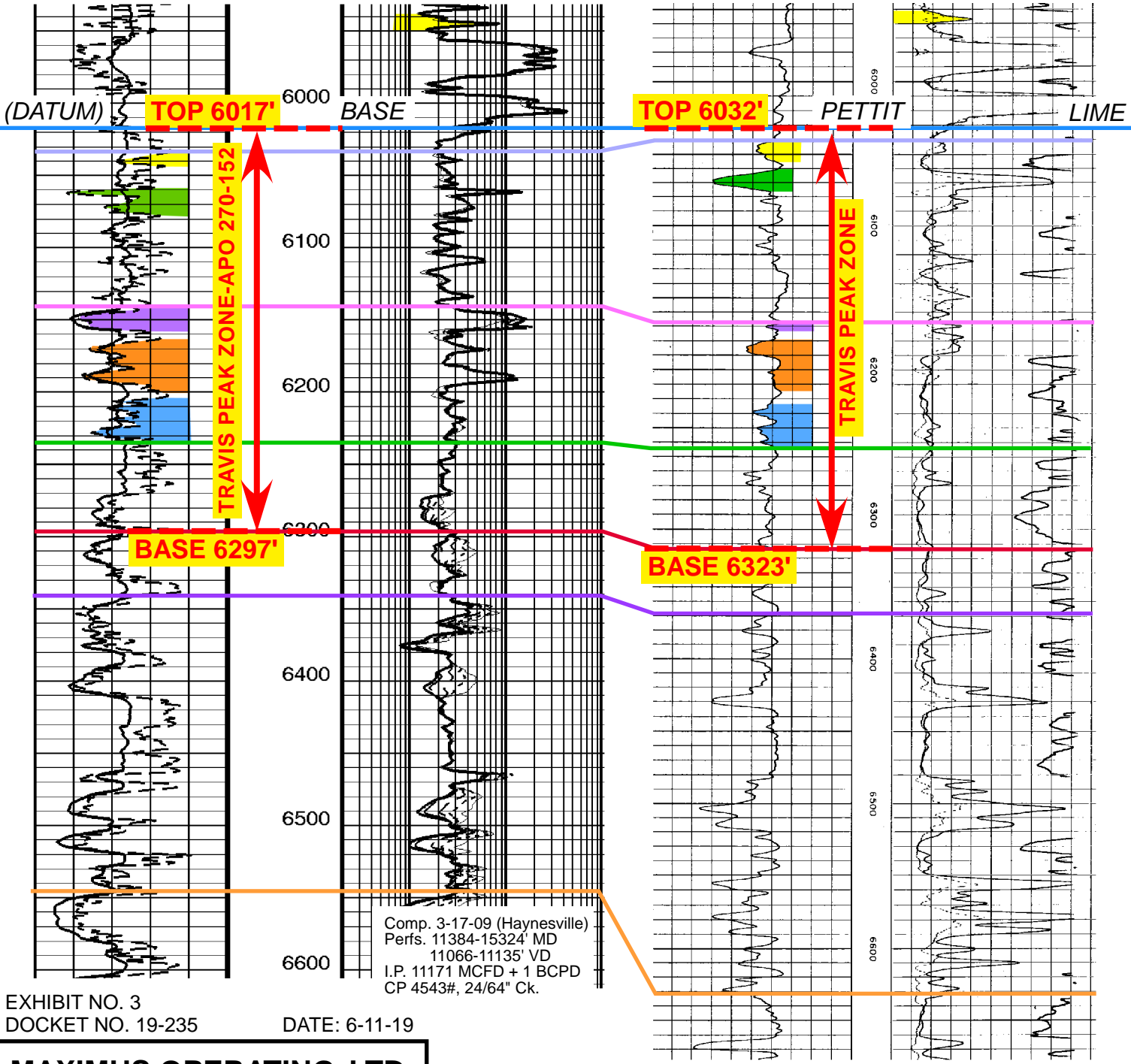


EXHIBIT NO. 3
DOCKET NO. 19-235

DATE: 6-11-19

MAXIMUS OPERATING, LTD.

GREENWOOD-WASKOM FIELD
CADDO PARISH, LOUISIANA

Correlation Section
A-A'

BRYAN GROVES
OIL & GAS GEOLOGIST
www.bryangrovesgeology.com

P & A 5-12-60

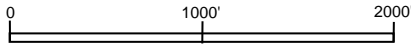
BRYAN GROVES
OIL & GAS GEOLOGIST

UNITIZATION / 3-D INTERPRETATION
www.bryangrovesgeology.com

MAXIMUS OPERATING, LTD.

GREENWOOD-WASKOM FIELD
CADDO PARISH, LOUISIANA

LOCATION PLAT

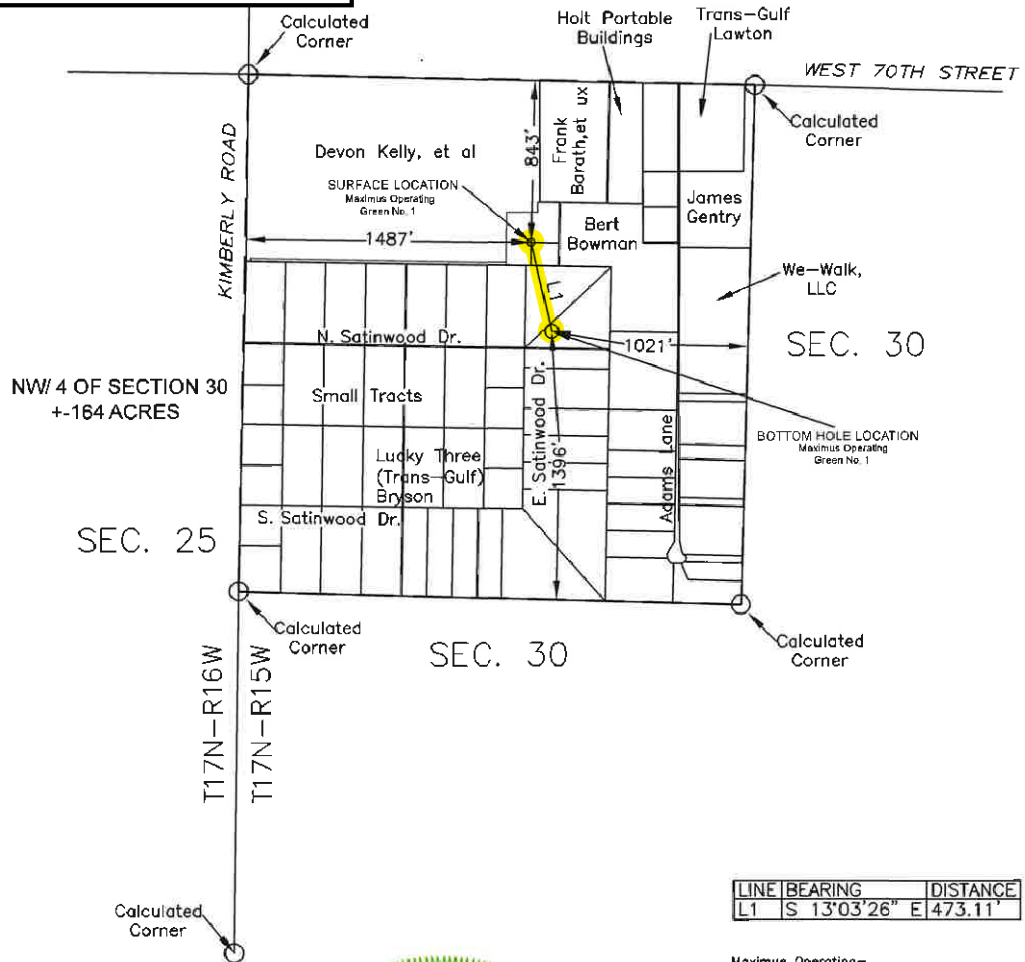


BRYAN GROVES
OIL & GAS GEOLOGIST
www.bryangrovesgeology.com

BRYAN GROVES
OIL & GAS GEOLOGIST
UNITIZATION / 3-D INTERPRETATION
www.bryangrovesgeology.com



SEC. 19



LINE	BEARING	DISTANCE
L1	S 13°03'26"	E 473.11'

NOTES:

- 1) All bearings shown hereon are based on Louisiana State Plane Coordinate System, North Zone 1701 as derived from GPS Observations.
- 2) Title information provided by Maximus Operating

I CERTIFY THAT THIS PLAT IS AN ACCURATE REPRESENTATION OF AN ACTUAL ON-THE-GROUND SURVEY MADE BY ME OR UNDER MY DIRECT SUPERVISION AND IS IN ACCORDANCE WITH THE "STANDARDS OF PRACTICE" AS STIPULATED IN LAC TITLE 46:IX§2909 FOR A CLASS D SURVEY.



Maximus Operating - Green No. 1 as follows:
SURFACE LOCATION being 843' from the North Line and 1487' from the West Line of Section 30, located in Section 30, T17N-R15W, Caddo Parish, Louisiana.

BOTTOM HOLE LOCATION	
NAD 83	
N=708,343	E=2,834,737
LAT.=32.43905	LONG.=93.94598
NAD 27	
N=647,633	E=1,553,950
LAT.=32.43890	LONG.=93.94580

SURFACE LOCATION	
NAD 83	
N=708,803	E=2,834,630
LAT.=32.58667	LONG.=93.79020
NAD 27	
N=648,093	E=1,553,643
LAT.=32.44032	LONG.=93.94635

Robert Shane Nafe P.L.S. 5202 Date 4/23/19

DRAWN CG/AR DATE 3/23/19		PREPARED FOR		MAXIMUS OPERATING Green No. 1 Well Section 30, T17N-R15W Caddo Parish, Louisiana	
CHECKED SN AFE:		MAXIMUS OPERATING			
APP'D SN GGS:					
SCALE 1"=800'					
REV#	DATE	DESC.	CLIENT PROJECT NAME Green No. 1		
1	4/22/19	Add Bottom Hole Location	JOB NO. 19097	SHEET 1 OF 1	REV. 2
2	4/23/19	Add lot lines and distances to plat	DWG. NO. 19097-02		



R 16 W

R 15 W

24

19

20

States Harrison
4985'

Anthony Tri-State Rty.
4965'

Franks Anisman
1
5000'
Crow & Franks
Gayle-Anisman-Kuperman
1
4950'

The Derrick at Greenwood, Inc.

Schuster Walker
2667'
Peoples State Bank

Interstate 20

New Night, Ltd.

L. A. Millican

Interstate 20 Investments, LLC

Small Tracts

Linn Auto Parts Unlimited, Inc.

Small Tracts

W. 70th St.

TP SU 100
(UNDRILLED)
+/-164 ACRES

Castle Rock Land Co., LLC

Kimberly Rd.

Frank Barath, et ux

Holt Portable Buildings

Trans-Gulf Lawton
16(1)
4970'

James Gentry

Grigsby Adams
14(1)
4990'

Kimberly Monroe

Owen Adams, et ux

Hughes Holtsclaw
2
5043'

Silverthorn Land, LLC

Devon Kelly, et al

PSL

Bert Bownam

We-Walk, LLC

Lucky Three (Mayfield Lawton) AMI
15(2)
(5003')
5038'

Small Tracts

Small Tracts

Small Tracts

Chesapeake Adams 30-17-15H-1

Hughes (John Franks) Holtsclaw-Noel
1
(4975')
4160'

T
17
N

25

Silverthorn Land, LLC

N. Satinwood Dr.

Maximus Green

States Lawton
1
8661'

PBHL

E. Satinwood Dr.

Lucky Three (Trans-Gulf) Bryson
17(1)
5023'

S. Satinwood Dr.

Mayfield Lawton
21(1)
4994'

30

Grigsby Adams
19(1)
4970'

29

John Franks Hamilton-Holtsclaw Un.
1
4991'

Small Tracts

Small Tracts

Mayfield Lawton

30

Beebe Drive

Winburn Drive

Golden Meadow Rd.

Trans-Gulf Lawton
20(4)
4976'

15945' MD
11360' VD

32

36

31

EXHIBIT NO. 4

DOCKET NO. 19-235

DATE: 6-11-19

MAXIMUS OPERATING, LTD.

GREENWOOD-WASKOM FIELD
CADDOPARISH, LOUISIANA

PROPOSED UNIT
Travis Peak Zone

0 1000' 2000'

BRYAN GROVES
OIL & GAS GEOLOGIST
www.bryangrovesgeology.com

NOTE: ALL UNIT BOUNDARIES ARE GEOGRAPHIC

BRYAN GROVES
OIL & GAS GEOLOGIST

UNITIZATION / 3-D INTERPRETATION

www.bryangrovesgeology.com